



OAKLAND ART ASSOCIATION

January, 2017

www.OaklandArt.org

New Oakland City Hall Show: John Henry

CITY PEOPLE, PEOPLE AND PLACES OF OAKLAND AND BEYOND

The Oakland Art Association has been invited to mount a themed show in the magnificent Oakland City Hall from March 1 to April 28, 2017. A show with an Oakland theme is perfect for this location, as we will be exhibiting on the third floor of the city hall, next to the Mayor's office, the City Council Chambers, and other important city offices – a very high visibility location. And, if you haven't been inside the city

hall, be advised – it is like a palace, a truly spectacular building. This is a great opportunity for our organization – together with our Law Library Shows and our exhibitions in the Oakland Chamber of Commerce, we are building a strong artistic presence in the City of Oakland.

While we would like a significant core of artwork showing Oakland people, we would like to display cityscapes and land-

scapes as well. Certainly, we would like to show off the strengths and beauty of the city and the area. Space is somewhat limited, so we will be able to accommodate a maximum of two pieces from each artist, and artists will need to register in advance for the show.

More details are available in the show Prospectus on page 4.

Inside this issue:

New Show at City Hall	1
Calendar	1
News and Notes	2
Solo Show Schedule	2
2017 Renewal Form	3
2017 Juried show list	3
City Hall Show Rules	4
John Muir Show Rules	5
Chamber Show Rules	6
Show Entry Forms	7

Mark Your Calendar:

January 27th Friday 10am **OAA Board Meeting** at the Rockridge Café, 5492 College Ave, Oakland. All members are welcome to attend.

March 1st Wednesday **Oakland City Hall Show** see rules on page 4.

March 3rd, Friday **John Muir Hospital Show** see rules on page 5.

March 24th Friday, **Oakland Chamber Shows.** (pick up previous and enter the new show) see rules on page 6.

News and Notes:

- It's time to **renew your membership in the Oakland Art Association for 2017!** See **facing page for details and the mail in form.** (If you are a new member since June 30th, 2016 you are paid up for 2017.) Please do not put this off, we are a relatively small organization with 10 juried shows in 2017, **OAA desperately needs your commitment and talent** to pull this off. Send your check and the renewal form to Hallie ASAP!

- WOW Three big juried shows in March!** This will be OAA's "pinch point" during 2017. Of course our Show Chairmen works to avoid having events bunch up like this, but it always comes down to whether we want to do a particular show or not. This year OAA (finally after several years trying) landed the **new show at City Hall. Time wise it fell right on top of two other previously scheduled shows,** and of course we didn't say no. **Now the challenge for all members is to rally and populate all three March venues with great art!**

- Please take special note of the rules for the upcoming City Hall Show on Page 4,** this show will be a little different than a typical OAA show. **First note that this is a themed show, titled "City People – people and places of Oakland and beyond".** There are no specific guidelines, however the Show Chairman may reject entries that in his judgement, do not follow the theme. **Secondly, you'll need to advise the Show Chairman (John Henry) concerning the number and sizes of your entries about two weeks before the take-in** so he can plan the show layout. The

goal is to put on a very organized and special first show in hopes that OAA will be asked back to City Hall on some regular interval!

- Tony Kay** has a show **"Photo Fusion" up at The Lightroom** (2263 5th Street in Berkeley) now through mid February.

- S. Newman** has a "commissioned " **show at the Mountain View City Hall and the Mountain View Performing Arts Center** running through February 6th.

- During the December Board Meeting it was unanimously **decided to earmark \$4,500 of our**

cash reserve to support Art Education in our communities going forward. Further it was also decided that going forward **OAA will put all commissions on sales of members art toward the same Art Education fund.** The mission of OAA is evolving: first to **provide public venues for our members** to show and sell their art, but also **to dedicate our resources to Art Education.**

- Contact the editor** as follows with any corrections and suggestions: Rick Nelson / rix-ingm@gmail.com / (925)-256-6849

OAA 2016/17 Solo Shows			
First Federal Savings		Piedmont Gardens	
6058 College Ave Oakland, CA 94618		110 41st Street Oakland, CA 94611	
Julia Montrond coordinator (510) 841-0688 jmontrond@gmail.com		George Ehrenhaft coordinatc (925) 377-9315 w hotline@aol.com	
September	<i>David</i>	September	<i>Tina</i>
October	<i>Silva</i>	October	<i>Nelson</i>
November	<i>Marie</i>	November	<i>Rick</i>
December	<i>Cotter</i>	December	<i>Nelson</i>
January	<i>Julia</i>	January	<i>Jim</i>
February	<i>Montrond</i>	February	<i>Forgione</i>
March	<i>Carolyn</i>	March	<i>Wenda</i>
April	<i>Gaye</i>	April	<i>Pyman</i>
May	<i>Beth</i>	May	<i>Linda</i>
June	<i>Bourland</i>	June	<i>Flamm</i>
July	<i>Evelyn</i>	July	<i>George</i>
August	<i>Call</i>	August	<i>Ehrenhaft</i>
September	<i>Rick</i>	September	<i>Ikuko</i>
October	<i>Nelson</i>	October	<i>Boylard</i>
November	<i>Sonia</i>	November	<i>Joan</i>
December	<i>Tamez</i>	December	<i>Gambos</i>

OAKLAND CITY HALL GALLERY SHOW**CITY PEOPLE, PEOPLE AND PLACES OF OAKLAND AND BEYOND**

March 1st 2017 through April 28th, 2017 / 1 Frank H Ogawa Plaza , Oakland CA 94612
Paintings (all Media), Drawings, Photography, Collage, Monoprints, etchings, woodcuts

Exhibit Rules

PRE-REGISTRATION: email Chairman before Feb. 15th with number and size of your entries

SHOW CHAIR: John Henry - johnfranklinhenry@gmail.com - (510) 525-7954

RECEIVING: Wednesday, March 1st, 2017 from 10 am until 11:30am, 3rd Floor City Hall (address above).

JUROR: TBD

ACCEPTED WORKS: Pick up at City Hall 3rd floor on Friday April 28th, 2017 between 10 am and 11am.

ENTRIES: **Up to 2 entries will be accepted per member.** Entries will be two dimensional; 12"x 12" min. and 36"x 36" max. - nominal size including mats.

Works restricted to original work – no class work or copies.

Nudes and political statements are not accepted (venue requirement).

All work must be for sale.

Transportation of artwork to and from the library is the responsibility of the artist.

All work having won cash awards in any OAA show are not eligible to receive another cash award, but may receive a merit award.

To be entered as a single work, any grouping of 2 or more works must be mounted within a single frame which meets the overall size requirements.

ENTRY FEE: \$8.00 per entry.

FRAMING:

No wide (may not exceed 3") or elaborate frames will be accepted.

Mats must be clean and well cut.

Frames must be clean, sturdy and no protruding screw eyes or hangers will be allowed.

Works larger than 24" x 30" (if covered) must be under plastic instead of glass.

ENTRY FORMS: Must be filled out completely and affixed to the upper left hand corner on the back of the entry.

AWARDS: First award \$100; Second award \$50; Third award \$25. Merit awards are given at the discretion of the Juror.

INSURANCE: A waiver must be signed on receiving day.

SALES:

All sales made during the show and/or 30days following the close of the show (if the work was seen by the buyer at the show) will be handled by the Sales Chair (Tina Nelson 925 256-6849).

OAA policy is that no change will be made in the price (in connection with this show) after the work is accepted. The artist agrees that 30% of the sale price will be taken as a contribution to OAA. Sales tax of 9% will be added to all sales.

John Muir Medical Center Show

1601 Ygnacio Valley Road, Walnut Creek, CA

March 3rd through April 21st 2017

Paintings (all Media), Drawings, Photography, Collage, Monoprints, etchings, and woodcuts.

Exhibit Rules

SHOW CHAIR: Rick Nelson rixingm@gmail.com (925) 256-6849

RECEIVING: Friday March 3rd 2017 from 10 AM until 11AM at the Presbyterian Church, 4101 Park Blvd., Oakland. Enter parking lot from Hampel Street.

JUROR: TBD

ACCEPTED WORKS: Pick up 4PM until 5PM Friday, April 21st, 2017 at a location in Oakland to be determined.

ENTRIES: **** Take Special Note Here

Entries must be two dimensional; The sides (including the frame) must measure at least 17"x 21", but no more that 46" in either direction. Size is a big deal at John Muir — no exceptions will be made!

Up to 2 entries accepted per member.

Works restricted to original work – no class work or copies.

All work must be for sale.

To be entered as a single work, any grouping of 2 or more works must be mounted within a single frame which meets the overall size requirements.

John Muir Medical Center reserves the right to refuse to exhibit any work of art which it determines at its sole discretion to be unsuitable for exhibition in the hospital setting. Included in the unsuitable category are nudes and any subject which could be construed as being of a religious or political in nature.

ENTRY FEE: \$8.00 per entry.

FRAMING:

No wide (may not exceed 3") or elaborate frames will be accepted.

Mats must be clean and well cut.

Frames must be clean, sturdy and no protruding screw eyes or hangers will be allowed.

Works larger than 24" x 30" (or 720 square inches) if covered, must be under plastic instead of glass.

LABELS: Must be filled out completely and affixed to the upper left hand corner on the back of the entry. Labels must give: DIMENSIONS, DATE OF WORK AND MEDIUM. **PLEASE TYPE OR PRINT LEGIBLY!**

AWARDS: First award \$100; second award \$50; third award \$25. Merit awards are given at the discretion of the Juror.

INSURANCE: A waiver must be signed on receiving day.

SALES:

All sales made during the show and/or 30days following the close of the show (if the work was seen by the buyer at the show) will be handled by the Sales Chairman Tina Nelson (925) 256-6849 rixin2@aol.com

OAA policy is that no change will be made in the price (in connection with this show) after the work is accepted.

The artist agrees that 30% of the sale price will be taken as a contribution to OAA.

Sales tax of 9% will be added to all sales.

OAKLAND CHAMBER OF COMMERCE SHOW

Friday March 24th 2017 through Friday June 16 2017

Paintings (all Media), Drawings, Photography, Collage, Monoprints, etchings, woodcuts, glass, etc.

Exhibit Rules

CHAIR: Evelyn Call — evcallarabs@att.net— (510) 632-7283

RECEIVING: Friday March 24th 2017 from 10 AM until 11AM at the Presbyterian Church, 4101 Park Blvd., Oakland. Enter parking lot from Hampel Street.

JUROR: TBD

ACCEPTED WORKS: Pick up on Friday June 16 2017 10 AM until 11AM at the Presbyterian Church.

ENTRIES: Up to 2 entries will be accepted per member. Entries will be two dimensional; 12"x 12" min. and 36"x 36" max. - nominal size including mats.

Artworks depicting iconic scenes of San Francisco are not appropriate for this venue! If entered, artwork in this category may be rejected at the sole discretion of the show chairman.

Because only 7 "large" (i.e. over 24"X30") works can be displayed in the show space, only the first 7 "large" pieces will be accepted, unless specifically allowed by the Show Chair.

Works restricted to original work – no class work or copies. Nudes and political statements are not accepted (venue requirement). All work must be for sale. The Chamber reserves the right to reject any work from the show for any reason.

Any work shown at a Chamber of Commerce Show **prior to** December 2014 may be shown again at this show. Any work having won a cash award in any OAA show is not eligible to receive another cash award but may receive a merit award.

To be entered as a single work, any grouping of 2 or more works must be mounted within a single frame which meets the overall size requirements.

ENTRY FEE: \$8.00 per entry.

FRAMING: No wide (may not exceed 3") or elaborate frames will be accepted.

Mats must be clean and well cut and frames must be clean, sturdy and no protruding screw eyes or hangers will be allowed.

Works larger than 24" x 30" (if covered) must be under plastic instead of glass.

Entry Forms : Must be filled out completely and affixed to the upper left hand corner on the back of the entry.

PLEASE TYPE OR PRINT LEGIBLY!

AWARDS: First award \$100; Second award \$50; Third award \$25. Merit awards are given at the discretion of the Juror.

INSURANCE: A waiver must be signed on receiving day.

SALES:

All sales made during the show and/or 30days following the close of the show (if the work was seen by the buyer at the show) will be handled by the Sales Chairman Tina Nelson rixin2@aol.com or 925 256-6849.

OAA policy is that no change will be made in the price (in connection with this show) after the work is accepted. The artist agrees that 30% of the sale price will be taken as a contribution to OAA. Sales tax of 9% will be added to all sales.

OAA show entry form

Attach this label to the upper left corner on the back of the entry. PLEASE WRITE OR PRINT LEGIBLY!

_____ SHOW

Artist _____ Phone _____

Title _____

Price _____ Medium _____ Date _____

Entry Fee _____ Size: H _____ W _____

This work has already won an OAA cash award ()

Artwork exhibited in these prior OAA shows:

Please mark one of the following:

OK to display image of this artwork online ()

OK to display online, but only with a watermark ()

DO NOT display images of this work online ()

_____ SHOW

Artist _____ Phone _____

Title _____

Price _____ Medium _____ Date _____

Entry Fee _____ Size: H _____ W _____

OK to display image of this artwork online ()

OK to display online, but only with a watermark ()

DO NOT display images of this work online ()

_____ SHOW

Artist _____ Date _____

Title _____ Price _____

Artists Receipt

OAA show entry form

Attach this label to the upper left corner on the back of the entry. PLEASE WRITE OR PRINT LEGIBLY!

_____ SHOW

Artist _____ Phone _____

Title _____

Price _____ Medium _____ Date _____

Entry Fee _____ Size: H _____ W _____

This work has already won an OAA cash award ()

Artwork exhibited in these prior OAA shows:

Please mark one of the following:

OK to display image of this artwork online ()

OK to display online, but only with a watermark ()

DO NOT display images of this work online ()

_____ SHOW

Artist _____ Phone _____

Title _____

Price _____ Medium _____ Date _____

Entry Fee _____ Size: H _____ W _____

OK to display image of this artwork online ()

OK to display online, but only with a watermark ()

DO NOT display images of this work online ()

_____ SHOW

Artist _____ Date _____

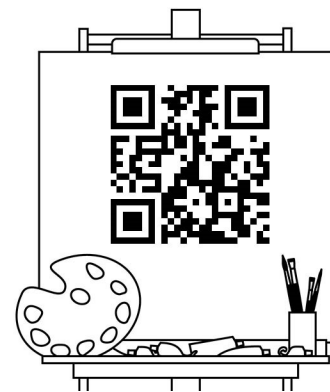
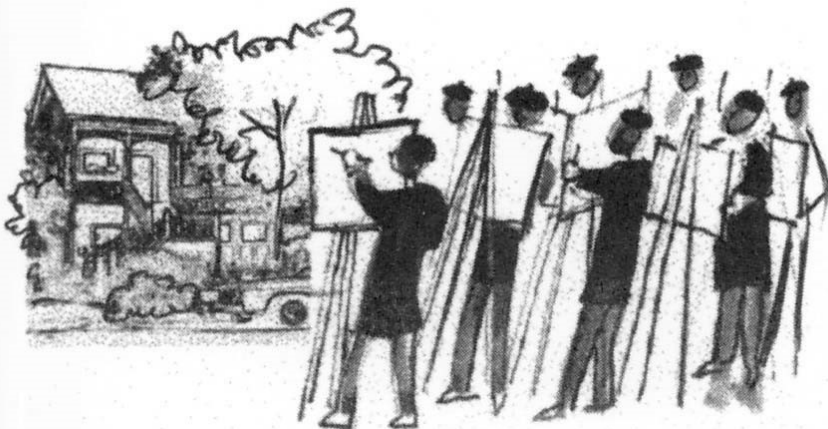
Title _____ Price _____

Artists Receipt

“To be timid, safe, complacent, or overly satisfied doesn't push the boundaries of creativity.”

~Mark Mehafeey

Oakland Art Association



Join us at oaklandart.org