

# OAKLAND ART ASSOCIATION

April 2009

[www.OaklandArt.org](http://www.OaklandArt.org)

## OAA Annual Luncheon and Meeting

It's time to attend the 2009 OAA Luncheon and Annual Meeting to be held at 11 am on Saturday April 18th at the Metro Lafayette Café. The event was scheduled on Saturday this year in hopes of attracting a broad cross section of members and guests. This year we have another great speaker; Mr. Ning Hou who was

born in Shanghai and received his BA degree from the Shanghai Art Institute. Mr Hou was instructed by noted Chinese artists Chang Show Wu, Yan Wan Leong, and Lu Hai Su. He arrived in the United States to pursue his art career at the Academy of Art College where he

graduated with his MFA in June 1986. Currently Ning Hou works from his studio in Locke California where he also offers painting classes and a series of Plein Air Workshops. Please see page 5 of this newsletter for additional detail, and the RSVP form which should be mailed ASAP. Call Chairman Jim Coy @ (925) 631-0738 if you need more information!

### Inside this issue:

Luncheon—JLS Show	1
News & Notes—Calendar	2
Chamber Show Catalog	3
Chamber Show Rules	4
Annual Lunch Details	5

## Jack London Square Show - May 7th

*Editors note: Leasing and warehousing activity in the various buildings where OAA has been showing art at Jack London Square, has caused change after change in the timing of the current show and in arranging the next show. Staying on top of this venue over the last month has been*

*very difficult and Show Chairman Rita Sklar's tenacity is the only thing that has kept OAA in the game. This is unquestionably the best show OAA currently has in terms of getting your art in front of the general public. Following is Rita's note laying out the timing for*

*ending the December show and opening the new show:*

Jack London Square has agreed to have a new show beginning May 7 and lasting 3 months, or until the buildings are leased. All artists exhibiting in the current show who have

Continued on Page 3

## News and Notes

- A **new member** was confirmed by the board in the March directors meeting: **Juliet Mevi-Shiflett** from Berkeley. Welcome to OAA Juliet, and please do not wait to get involved!
- The **2009 Roster** will be printed this month for **distribution at the Annual Meeting** on April 18th. Rosters will be mailed to members who can not attend. (Another good reason to sign up to the Luncheon—see page 5!)
- Please note that there will be **no April Board Meeting**,

as all OAA members will meet at the **Luncheon on April 18th**.

- The **Frank Bette Center for the Arts** in Alameda has several **studio spaces available** at \$500 per month, call Debra Owen (510) 523-6957.
- The **Marin Society of Artists** is hosting their annual **National Juried Show** during the month of August. This show is open to all artists — the deadline for entries is May 1st. The show rules and entry form is available on the **M S A website**

[www.marinsocietyofartists.com](http://www.marinsocietyofartists.com) but also on the OAA website @ [oaklandart.org](http://oaklandart.org). Contact Ikuko Boyland (510) 232-9864 for more details.

- **Contact the editor** as follows with any corrections and suggestions: **Rick Nelson** / 1584 Webb Lane / Walnut Creek 94595  
[rixingm@gmail.com](mailto:rixingm@gmail.com) / (925) 256-6849

## Mark Your Calendar:

**April 10**, Last day to get your **luncheon RSVP** and check to Shirley. See *page 6*.

**April 16, 10 am—4 pm** Pick up of **MTC Show** from 3rd floor Gallery. (101 Eighth St., Oakland)

**April 18, 11am** **OAA Annual Meeting and Luncheon**. See *page 6*.

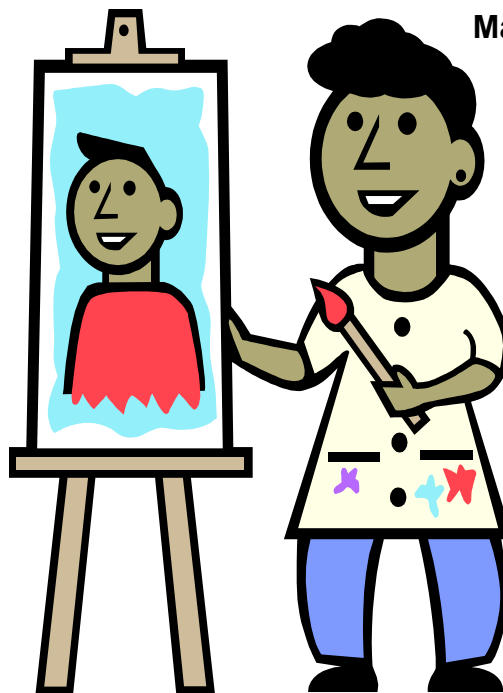
**April 23**, Deadline for **Jack London Square show entry forms** to Stan Cohen. See *page 1*.

**May 7, 9:45 am** pick up last of the artwork from the current **Jack London Show**. See *page 1*.

**May 7, 10 am** drop off work for the new **Jack London Show**. See *page 1*.

**May 15, Oakland Chamber show**. Pick up previous and enter the new show, see *Page 4*.

**May 29, 3pm** **Board meeting** in the Learning Center at the Oakland Museum of California. All members are encouraged to attend.



OAKLAND ART ASSOCIATION  
OAKLAND CHAMBER OF COMMERCE SHOW  
Show Catalog  
March 20, through May 16, 2009

Juror: **Benny Alba**

Exhibiting Artists:

<u>Artist</u>	<u>Title</u>	<u>Medium</u>	<u>Price</u>	<u>H</u>	<u>W</u>	<u>Award</u>
S. Newman	Father of the Bride	Oil	\$750	24	30	1st
Nelda Booras	Mountain Meadow	Acrylic	\$850	25	30.5	2nd
Ikuko Boyland	Castle Gate	Monotype	\$200	14	18	3rd
Rick Nelson	The Wadi	Photo	\$75	18	24	H
Danute Nitecki	The Blue Meadow	WC	\$600	34	28	H
Light Ruth	Bay of Poets	WC	\$300	28	23	H
Bobbe Anderson	Old Times	Acrylic	\$350	16	20	
Evelyn Call	Country Road	Oil	\$450	20	24	
Judith Dean	Crystal Web	Color Pencil	\$1,200	23	27	
Sylvia Fones	Hill - Crockett	Pastel	\$400	24	18	
Marie Guelld	Jenny	WC	\$500	20	24	
John Mallon	Oakland Oak Tree	Acrylic	\$1,000	24	24	
Ginger Papania	Stained Glass Series #4	Collage	\$425	30	22	
Carolyn Price	Tapestry	WC	\$375	16	20	
Michael Topliff	Orchids with Foliage	WC	\$275	20	16	

View This Artwork On Line: [www.oaklandart.org](http://www.oaklandart.org) ==> Gallery of OAA Shows

## Jack London Square Show

Continued

not picked up their paintings in April will pick up their paintings on Thursday, May 7 at 9:45 am at 450 Water Street. You may park temporarily on the side near 450 Water Street while you drop off or pick up your paintings. Artists for the new show, including Dinute Nitecki, Jenni-

fer Kolkhorst, Pat Dahlberg, George Ehrenhaft, Karen Powers, Shirley Schmalfus, Elizabeth Kavalier, Gladys Eaton and Bobbie Anderson should get their paperwork to Stan Cohen by April 23, if you have not done so yet. **Please let me know if you can help hang this show.** E-mail at

[RitaAtArt@sbcglobal.net](mailto:RitaAtArt@sbcglobal.net), or call and leave me a message at (510) 531-1404. Thank you for your cooperation. Jack London Square is a wonderful venue for us to show our art, and we need to do what we can to continue this relationship.

## Patty Nelson to Judge May Chamber Show

Patty Nelson is a Bay Area native specializing in jewelry and sculpture. She graduated with a BFA in 1996 from the Academy of Art University, where she currently is a jewelry/small metals instructor.

As a studio artist she creates large and small scale metal work, from silver earrings and bracelets to forged copper and steel gates. Her anti-war metal brooch "Peace" has recently been shown at Victo-

ria & Albert Museum in London and is currently traveling around the world in a group exhibition promoting peace. Ms. Nelson currently lives in Berkeley with her family.

**OAKLAND CHAMBER OF COMMERCE SHOW**

May 15, 2009

Paintings (all Media), Drawings, Photography, Collage, Monoprints, etchings, woodcuts

**Exhibit Rules****CHAIR:** John Mallon**RECEIVING:** Friday, May 15, 2009 from 10 AM until 12 noon at the Presbyterian Church, 4101 Park Blvd., Oakland. Enter parking lot from Hampel Street.**JUROR:** Patty Nelson [www.pattynelson.com](http://www.pattynelson.com)**ACCEPTED WORKS:** Pick up at the Presbyterian Church on Friday July 17, 2009 between 10 AM and 12 noon.**ENTRIES:** Only the first 20 entries will be accepted due to space limitations. Only 1 entry will be accepted per member, unless too few pieces are entered before the 12 noon deadline, in which case the Show Chairman **may** accept additional works provided they are immediately available, up to a grand total of 20 entries.

Entries will be two dimensional; 16"x 20" min. and 36"x 36" max.

**Artworks depicting iconic scenes of San Francisco are not appropriate for this venue!** If entered, artwork in this category may be rejected at the sole discretion of the show chairman.

Because only 7 "large" (i.e. over 24"X30") works can be displayed in the show space, only the first 7 "large" pieces will be accepted, unless specifically allowed by the Show Chair.

Works restricted to original work – no class work or copies. Nudes and political statements are not accepted (venue requirement). All work must be for sale. The Chamber reserves the right to reject any work from the show for any reason.

Any work shown at a Chamber of Commerce Show **prior to** March 2006 may be shown again at this show. Any work having won a cash award in any OAA show is not eligible to receive another cash award but may receive a merit award.

To be entered as a single work, any grouping of 2 or more works must be mounted within a single frame which meets the overall size requirements.

**ENTRY FEE:** \$8.00 per entry.**FRAMING:** No wide (may not exceed 3") or elaborate frames will be accepted.

Mats must be clean and well cut and frames must be clean, sturdy and no protruding screw eyes or hangers will be allowed.

Works larger than 24" x 30" (if covered) must be under plastic instead of glass.

**LABELS:** Must be filled out completely and affixed to the upper left hand corner on the back of the entry.**PLEASE TYPE OR PRINT LEGIBLY!****AWARDS:** First award \$100; Second award \$50; Third award \$25. Merit awards are given at the discretion of the Juror.**INSURANCE:** A waiver must be signed on receiving day.**SALES:**

All sales made during the show and/or 30days following the close of the show (if the work was seen by the buyer at the show) will be handled by the Sales Chairman Stan Cohen 510 533-3003.

OAA policy is that no change will be made in the price (in connection with this show) after the work is accepted.

The artist agrees that 30% of the sale price will be taken as a contribution to OAA.

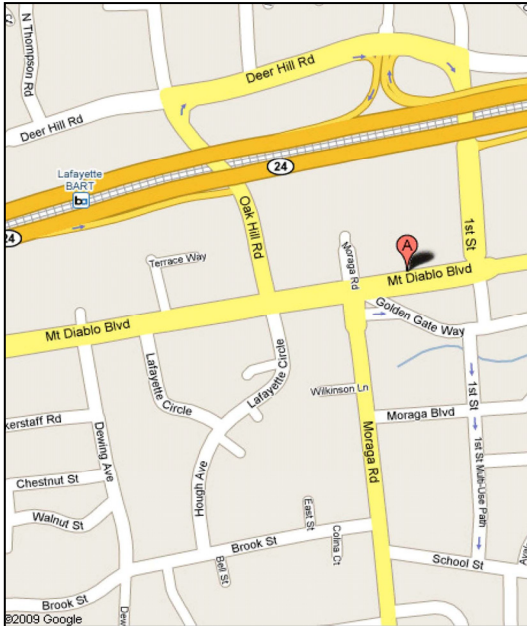
# OAA SPRING LUNCH and ANNUAL MEETING

All Members and Guest are Cordially Invited

Saturday, April 18th, 2009 at 11am

## Metro Lafayette

3524 Mt. Diablo Boulevard , Lafayette CA 94549 (Oak Hill Road off ramp from east bound CA 24)



Salade Nicoise  
 with wild tuna confit, tomatoes, green beans, fingerlings & olives  
 OR  
 Panini  
 of roasted pork loin, smoked bacon, grilled onions, cheddar & fries  
 OR  
 Housemade Gnocchi  
 with butternut squash, brown butter & crispy sage  
 OR  
 Wild Fish Tacos  
 with salsa verde & mixed greens  
 \*\*\*

Cookie Plate

Numi Organic Tea, Iced Tea or Illy Coffee  
 \*\*\*

### Agenda:

**11:00 AM** Social hour, **12:00 Noon** Buffet Luncheon, **1:00 PM** General Meeting and Program  
 Speaker Mr. Ning Hou ( please visit his website: [www.ninghow.com](http://www.ninghow.com) ) .

### Reservations Please:

===== Cut == here == and == Mail // Cut == here == and == Mail=====

Please send **\$25 per person** to OAA Treasurer no later than April 10, 2009:

Shirley Schmalfluss  
 415 Sunnyslope Ave.  
 Oakland, California 94610

Member Name: \_\_\_\_\_

Guest Name(s): \_\_\_\_\_

The modern artist is working with space and time and expressing his feelings rather than illustrating. — Jackson Pollock

## Oakland Art Association

