



# OAKLAND ART ASSOCIATION

June, 2016

[www.OaklandArt.org](http://www.OaklandArt.org)

---

***Inside this issue:***

---

## Mark Your Calendar:

**June 24th & July 29th** Friday 10am  
**OAA Board Meeting** at the Rockridge Café, 5492 College Ave, Oakland. All members are welcome to attend.

**June 24th** Friday 4:30—5:30 pm  
**Pick up your art from the John Muir Show at Park Blvd Church**

(4101 Park Blvd., Oakland. Enter parking lot from Hampel Street.)  
**August 3rd Wednesday, Rockridge Library Photography Show.** See rules on page 3.

**Aug. 31st Wednesday, Rockridge Library Traditional Media Show.** (see rules in the next newsletter)

**September 1st Thursday, Alameda County Law Library Show.** (see rules in the next newsletter)

**September 9th, and December 9th, 2016 (Fridays),** are the dates for the upcoming **Oakland Chamber shows.** (pick up previous and enter the new show)

Calendar	1
Coming Shows	1
News and Notes	2
Solo Shows	2
Rockridge Photo Rules	3
Chamber Show Catalog	4
Entry Forms	5

## Bunches of Shows:

The “crunch” is on! If you’ve looked at the calendar above you have already gotten the picture. The Photo Show at the Rockridge Library opens on August 3rd followed a month later by the Rockridge Li-

brary Painting Show, the Alameda County Law Library Show and the next Chamber Show all in very quick succession. Please plan ahead to enter work in all of these show, it will take a lot of your art to fill these venues.

*Editors Note: Your skill as an artist shines through all mediums, so please don't overlook the Rockridge Photo Show on August 3rd!*

# News and Notes:

- Please welcome new member **Judy Shelton** of Berkeley, who's application was accepted in May! We are all looking forward to meeting you and seeing you work in our shows.
- **OAA members Julia Montrond, S. Newman, and Danute Nitecki** are participating in the "Our Many Cultures" Show up now through Oct, 5th at the **Berkeley Planning and Development Department**.
- **Judy Towata Wiener** has a solo show up at **McGuire Real Estate**, 2991 College Ave. Berkeley, now through the end of October.
- Speaking of the **McGuire Real Estate** Gallery Show, Judy advises that this venue may represent an **opportunity for other member artists to show their work**.
- Members **Julie Mevi, Tina Nelson and Jan Stamos** are participating in the show "Forty Fridas" July 8th through August 26th, at the **Jingletown Art Studios**, 3001 Chapman Street in Oakland. **Receptions will be held on both July 8th and August 12th between 6 and 9pm.**
- **Wenda Pyman** has a solo show "Luminous Landscapes, Intercepting Light" at the **Moraga Public Library** during the month of July. 1500 St. Mary's Road, in Moraga.
- **The Hayward Arts Council** is sponsoring a **juried show this fall in the Hayward City hall**, open to artists throughout the Bay Area: <https://goo.gl/xMfa07> for all the details.
- There's room for several

**appointed board positions**, so please contact the editor if you would like to help direct OAA into the future.

- **Contact the editor** as follows with any corrections and suggestions: Rick Nelson / [rixingm@gmail.com](mailto:rixingm@gmail.com) / (925)-256-6849



*Evelyn Call and the buyer of her painting from latest Chamber Show. Beth Borland also sold one of her paintings from that same show. Congratulations artists!*

OAA 2015/16 Solo Shows			
First Federal Savings		Piedmont Gardens	
6058 College Ave Oakland, CA 94618		110 41st Street Oakland, CA 94611	
Julia Montrond coordinator (510) 841-0688 <a href="mailto:jmontrond@gmail.com">jmontrond@gmail.com</a>		George Ehrenhaft coordinator (925) 377-9315 <a href="mailto:wrhotline@aol.com">wrhotline@aol.com</a>	
May	<i>Danute</i>	May	<i>Evelyn</i>
June	<i>Nitecki</i>	June	<i>Call</i>
July	<i>Helen</i>	July	<i>Julie</i>
August	<i>Burke</i>	August	<i>Mevi</i>
September	<i>David</i>	September	<i>Rick</i>
October	<i>Silva</i>	October	<i>Nelson</i>
November	<i>Marie</i>	November	<i>Tina</i>
December	<i>Cotter</i>	December	<i>Nelson</i>

**ROCKRIDGE LIBRARY PHOTOGRAPHY SHOW**

August 3rd, through August 31st, 2016

Second Floor Gallery, Rockridge Library, 5366 College Avenue, Oakland California

Library Hours: Sun/Mon-Closed, Tue 12:30-8pm, Wed/Thurs/Sat 10-5:30pm, Fri 12:00-5:30pm

**EXHIBIT RULES**

**ALL 2 DIMENSIONAL MEDIA:** Photographic and digital projects only (photo collages etc. OK)

**CHAIR:** Rick Nelson—rixingm@gmail.com (925) 256-6849

**RECEIVING:** Wednesday August 3rd, 2016 between 11am and noon upstairs at the Rockridge Library.

**JUROR:** **TBD**

**ACCEPTED WORKS:** Pick up at the Library on Wednesday August 31st, between 11am and noon.

**ENTRIES:** Full outside (including frame) dimensions; 8" x 10" min. up to 21" x 27" max. Odd sizes will be accepted as long as the overall area falls between these limits.

Up to 3 entries accepted per member.

Works restricted to original work.

All work must be for sale.

To be entered as a single work, any grouping of 2 or more works must be mounted within a single frame which meets the overall size requirements.

**ENTRY FEE:** \$8.00 per entry.

**FRAMING:** Frames and mats must be clean, well cut, and sturdy.

**Entry Forms:** Must be filled out completely and affixed to the upper left hand corner on the back of the entry.

**AWARDS:** First award \$100; Second award \$50; Third award \$25. Merit awards are given at the discretion of the Juror.

**INSURANCE:** Each artist will be required to sign both the normal OAA insurance waiver **AND** the Oakland Public Library Exhibit Insurance Waiver Form.

**SALES:**

All sales made during the show and/or 30days following the close of the show (if the work was seen by the buyer at the show) will be handled by the Sales Chairman Tina Nelson (925) 256-6849 rixin2@aol.com

OAA policy is that no change will be made in the price (in connection with this show) after the work is accepted.

The artist agrees that 30% of the sale price will be taken as a contribution to OAA.

Sales tax of 9% will be added to all sales.

# Oakland Art Association Oakland Chamber Show -- June 2016

Artist	Title	Medium	Price	Height	Width	Award
S. Newman	Mock Duck	Oil	\$1,000	24	30	1st
Julia Montrond	Dancing Fig Tree	Watercolor	\$520	21	29	2nd
Beth Bourland	Feel lucky - China Town	Watercolor	\$175	22	18	3rd
Rick Nelson	Maggie	Photograph	\$125	16	20	HM
Tina Nelson	On Ice	Oil	\$260	12	12	HM
Beth Bourland	A Brighter Future	Watercolor	\$150	12	9	
Helen Burke	Arch Rock - Channel Island	Sumi Ink + Watercolor	\$400	12	16	
Helen Burke	Upper - Lower Yosemite Falls	Sumi Ink + Watercolor	\$350	15	12	
Evelyn Call	Flamingos	Oil	\$300	16	20	
George Ehrenhaft	Prague Riverfront	Watercolor	\$300	16	20	
Jim Forgione	4 Square 4	Acrylic	\$180	20	20	
Jim Forgione	Hansen Coffee - 4th Street	Acrylic	\$320	18	24	
Rohilah Guy	Untitled	Acrylic	\$150	14	11	
Thomas McCort	Point Isabel	Acrylic	\$100	14	17	
Thomas McCort	Wind River Range	Acrylic	\$100	14	17	
Rick Nelson	Succulent	Photograph	\$125	20	16	
Danute Nitecki	Complications	Watercolor	\$400	20	16	
Lynette Parker	Nam Jungle Boot in Flight	Mixed	\$80	11	14	
Shirley Schmalfus	Pacific Grove	Acrylic	\$500	18	24	
A. Risi Streich	Detour	Acrylic Mixed	\$300	30	24	
July Towata Wiener	Untitled	Acrylic	\$900	30	30	
<b>Juror: Laura Ruberto</b>						
<b>View images of the Art online: <a href="http://www.oaklandart.org">www.oaklandart.org</a></b>						
<b>If you have an interest in purchasing art from this show</b>						
<b>Please call Tina Nelson (925) 256-6849 or</b>						
<b>email: <a href="mailto:rixin2@aol.com">rixin2@aol.com</a></b>						

### OAA show entry form

Attach this label to the upper left corner on the back of the entry. PLEASE WRITE OR PRINT LEGIBLY!

\_\_\_\_\_ SHOW

Artist \_\_\_\_\_ Phone \_\_\_\_\_

Title \_\_\_\_\_

Price \_\_\_\_\_ Medium \_\_\_\_\_ Date \_\_\_\_\_

Entry Fee \_\_\_\_\_ Size: H \_\_\_\_\_ W \_\_\_\_\_

This work has already won an OAA cash award ( )

Artwork exhibited in these prior OAA shows:

\_\_\_\_\_

Please mark one of the following:

OK to display image of this artwork online ( )

OK to display online, but only with a watermark ( )

DO NOT display images of this work online ( )

\*\*\*\*\*

\_\_\_\_\_ SHOW

Artist \_\_\_\_\_ Phone \_\_\_\_\_

Title \_\_\_\_\_

Price \_\_\_\_\_ Medium \_\_\_\_\_ Date \_\_\_\_\_

Entry Fee \_\_\_\_\_ Size: H \_\_\_\_\_ W \_\_\_\_\_

OK to display image of this artwork online ( )

OK to display online, but only with a watermark ( )

DO NOT display images of this work online ( )

\*\*\*\*\*

\_\_\_\_\_ SHOW

Artist \_\_\_\_\_ Date \_\_\_\_\_

Title \_\_\_\_\_ Price \_\_\_\_\_

Artists Receipt

### OAA show entry form

Attach this label to the upper left corner on the back of the entry. PLEASE WRITE OR PRINT LEGIBLY!

\_\_\_\_\_ SHOW

Artist \_\_\_\_\_ Phone \_\_\_\_\_

Title \_\_\_\_\_

Price \_\_\_\_\_ Medium \_\_\_\_\_ Date \_\_\_\_\_

Entry Fee \_\_\_\_\_ Size: H \_\_\_\_\_ W \_\_\_\_\_

This work has already won an OAA cash award ( )

Artwork exhibited in these prior OAA shows:

\_\_\_\_\_

Please mark one of the following:

OK to display image of this artwork online ( )

OK to display online, but only with a watermark ( )

DO NOT display images of this work online ( )

\*\*\*\*\*

\_\_\_\_\_ SHOW

Artist \_\_\_\_\_ Phone \_\_\_\_\_

Title \_\_\_\_\_

Price \_\_\_\_\_ Medium \_\_\_\_\_ Date \_\_\_\_\_

Entry Fee \_\_\_\_\_ Size: H \_\_\_\_\_ W \_\_\_\_\_

OK to display image of this artwork online ( )

OK to display online, but only with a watermark ( )

DO NOT display images of this work online ( )

\*\*\*\*\*

\_\_\_\_\_ SHOW

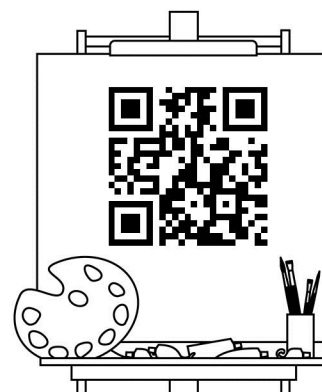
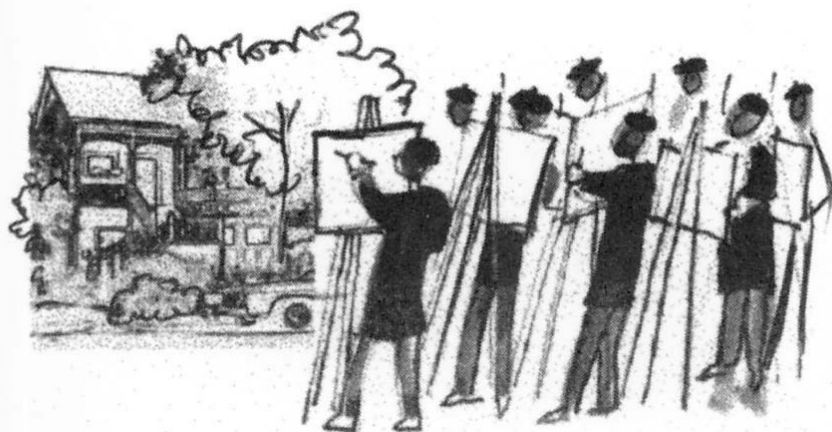
Artist \_\_\_\_\_ Date \_\_\_\_\_

Title \_\_\_\_\_ Price \_\_\_\_\_

Artists Receipt

"Art is the cultural bedrock of a civilization and its worth is beyond measure." ~Richard McKinley

## Oakland Art Association



*Join us at [oaklandart.org](http://oaklandart.org)*